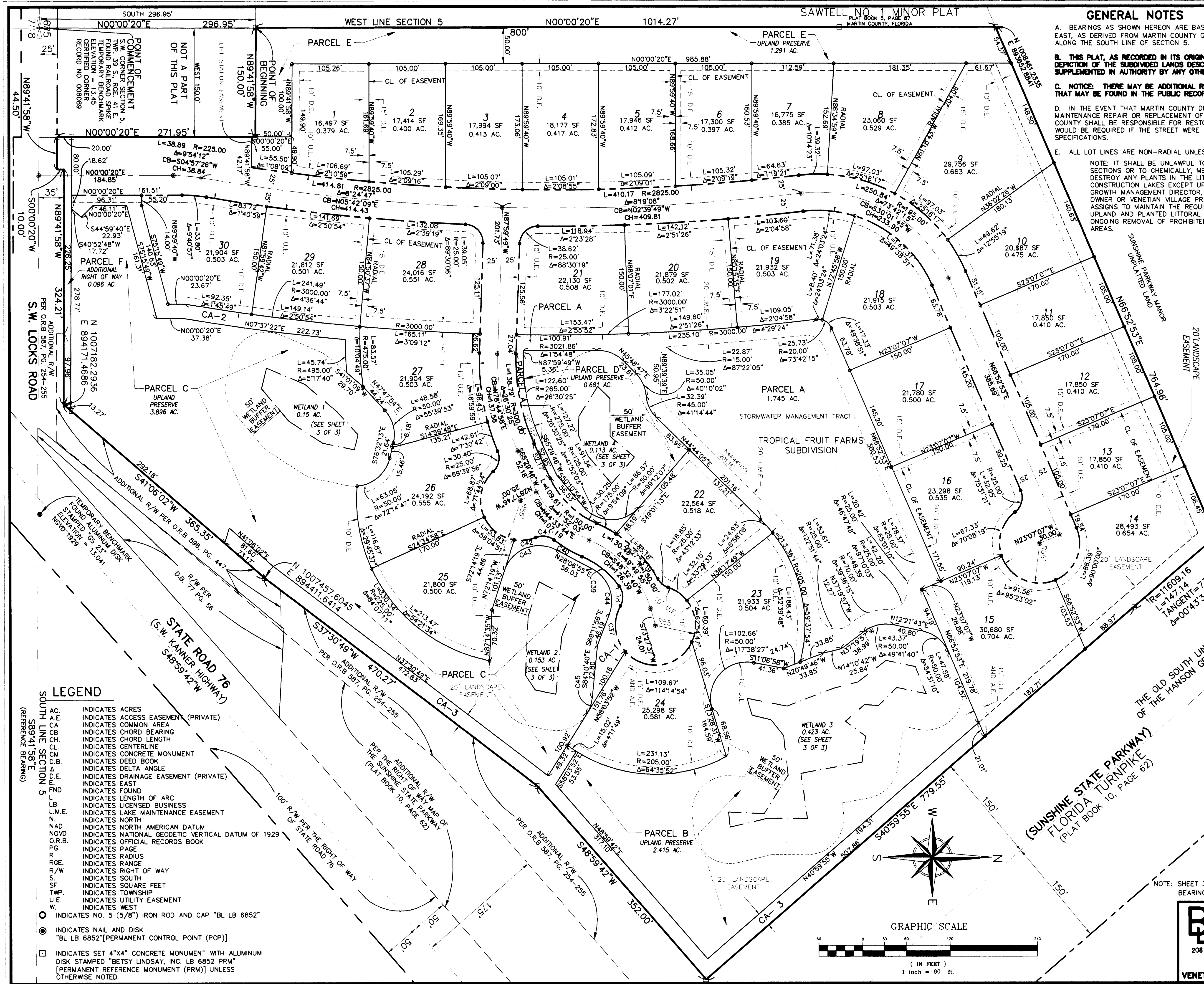
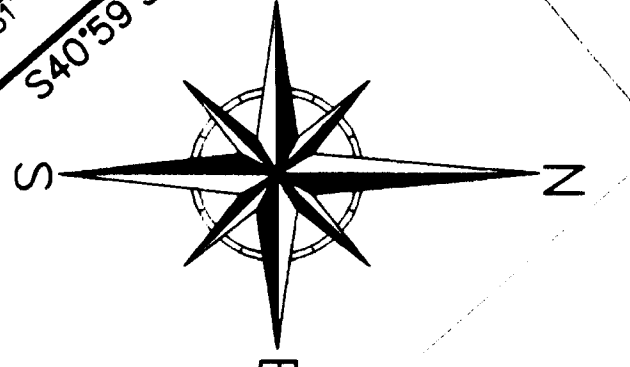


GENERAL NOTES
A. BEARINGS AS SHOWN HEREON ARE BASED ON STATE PLANE COORDINATES, NAD 83/90, FLORIDA EAST, AS DERIVED FROM MARTIN COUNTY G.P.S. POINTS, REFERENCE A BEARING OF S89°41'58"E ALONG THE SOUTH LINE OF SECTION 5.



CURVE TABLE FOR COMMON AREA 1
Table with 5 columns: CURVE, LENGTH, RADIUS, DELTA ANGLE. Lists curves C37 through C45 with their respective dimensions.

LEGEND
AC. INDICATES ACRES
A.E. INDICATES ACCESS EASEMENT (PRIVATE)
C.A. INDICATES COMMON AREA
C.B. INDICATES CHORD BEARING
C.L. INDICATES CHORD LENGTH
C.M. INDICATES CENTERLINE
C.M. INDICATES CONCRETE MONUMENT
D.B. INDICATES DEED BOOK
D.A. INDICATES DELTA ANGLE
D.E. INDICATES DRAINAGE EASEMENT (PRIVATE)
E. INDICATES EAST
F. INDICATES FOUND
L. INDICATES LENGTH OF ARC
L.B. INDICATES LICENSED BUSINESS
L.M.E. INDICATES LAKE MAINTENANCE EASEMENT
N. INDICATES NORTH
N.A.D. INDICATES NORTH AMERICAN DATUM
N.G.V.D. INDICATES NATIONAL GEODETIC VERTICAL DATUM OF 1929
O.R.B. INDICATES OFFICIAL RECORDS BOOK
P.G. INDICATES PAGE
R. INDICATES RADIUS
R.G. INDICATES RANGE
R/W. INDICATES RIGHT OF WAY
S. INDICATES SOUTH
S.F. INDICATES SQUARE FEET
T.W.P. INDICATES TOWNSHIP
U.E. INDICATES UTILITY EASEMENT
W. INDICATES WEST



BETSY LINDSAY, INC. SURVEYING AND MAPPING
208 NORTH U.S. HWY NO. 1 - UNIT 8 - TEQUESTA, FLORIDA 33469
(561)575-5275 (561)575-4324 FAX
LICENSED BUSINESS NO. 6852
VENETIAN VILLAGE SHEET 2 OF 3

S:\bls\SDSK\PROJECTS\02\LOCK2\VENETIAN-PLAT.dwg, 7/24/2006 1:50:21 PM, HP, DesignPlotter 500 24xHPGL2 Card, BLS